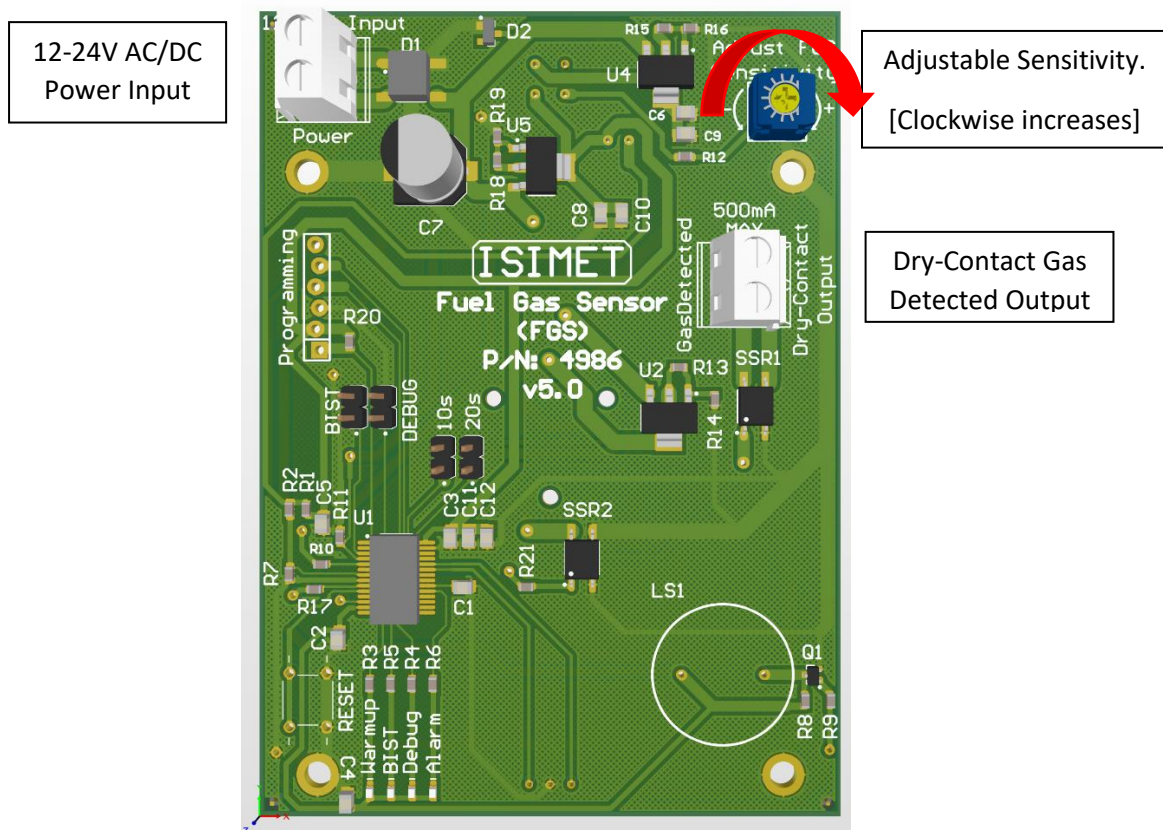


ISIMET FGS_{v2} Installation Instructions

ISIMET's Fuel Gas Sensor features a raw gas sensor, a red/green indicator LED and a bright alarm LED mounted onto a Stainless-Steel Wall Panel. A galvanized wall box is included and designed to be installed in flush mount applications. The FGS is intended for use as a sensor to detect raw fuel gas such as methane, iso-butane, and propane. Operating power is provided by using an ISIMET Utility Controller and the FGS transmits a control signal back to the Utility Controller when raw fuel gas is detected.



Mounting Location: Dependent on the type of gas detected:

Natural Gas and Methane: Approximately 1 foot below the ceiling.

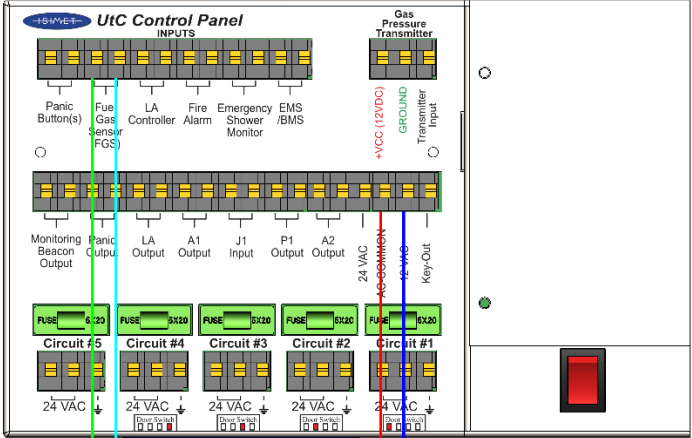
Propane and Butane: Approximately 1 foot above the floor.

In all instances, the FGS should be installed where it is most likely to detect a gas leak.

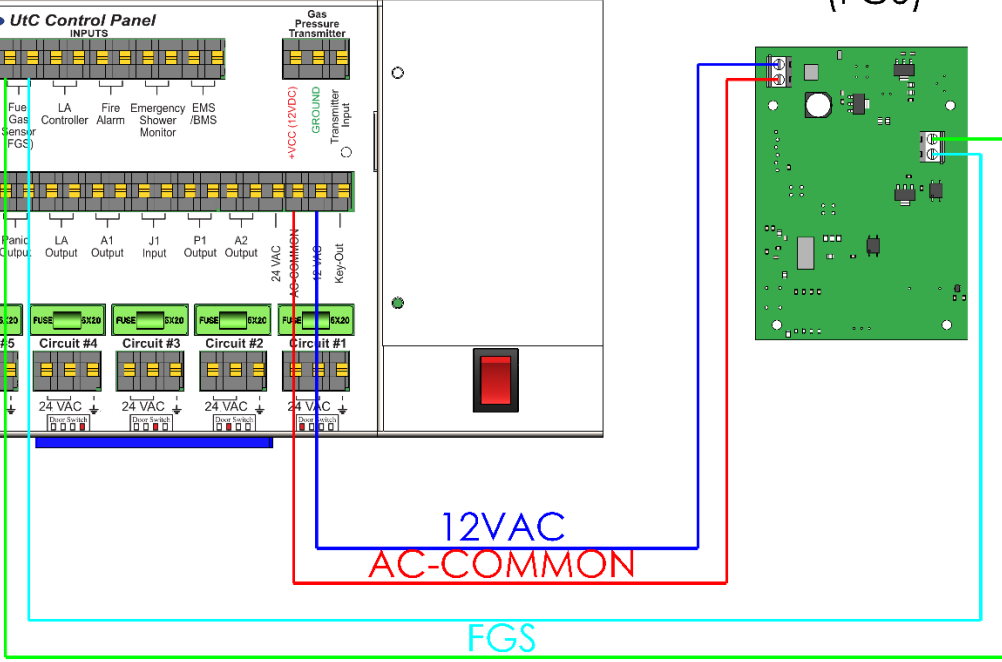
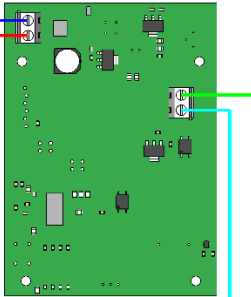
Model Number	FGS _{v2}	
Part Number	4986 v5.0	
Sensing Principle	MOS Type	
Target Gases	Methane, propane, iso-butane	
Conditioning Period for Optimum Results	7 days	
Optimum Environmental Conditions	20° C @ 65% R.H.	
Typical Detection Range	1~25% LEL of each gas	
Electrical Characteristics	Power Consumption	5W
	Input Voltage	12~24V AC/DC
	Output	Dry-Contact (Max: 500mA)



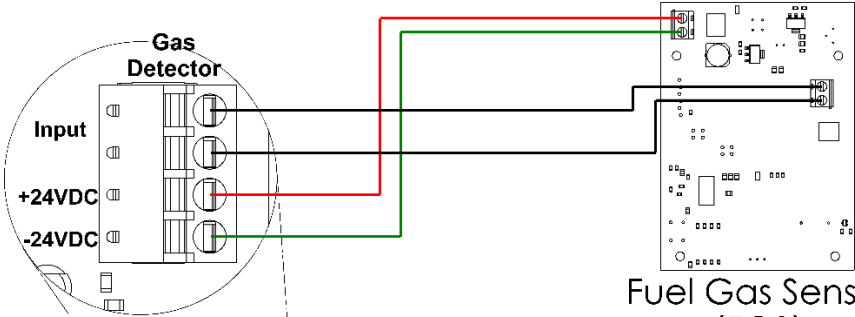
UtC Control Panel



Fuel Gas Sensor (FGS)

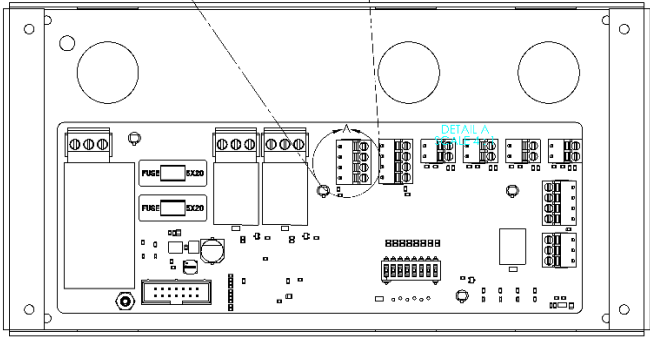


UtC Wiring Instructions



Fuel Gas Sensor (FGS)

LA_{v2}/KLA



LA_{v2}/KLA Wiring Instructions